



Xiamen Goldenhome Co., Ltd
Http: //www.goldenhomekitchen.com
No.190 Jihe Road, Tong'an Industrial Center Tong'an
District, Xiamen, China 361100
E-mail: Sales@goldenhomekitchen.com

GH2017001-GLOBAL



GoldenHome



GoldenHome Catalog



Contents

05-18

What Makes GoldenHome

19-22

GoldenHome Milestone & Honor

23-80

Kitchen Series

I Lacquer Series I Laminate Series
I Solid Wood Series I Thermofoil Series

Countertop

Sinks & Faucets

Drawers & Racks

Bathroom

Wardrobe

81-82

International GoldenHome

83-84

Sales Network Around the World

85-86

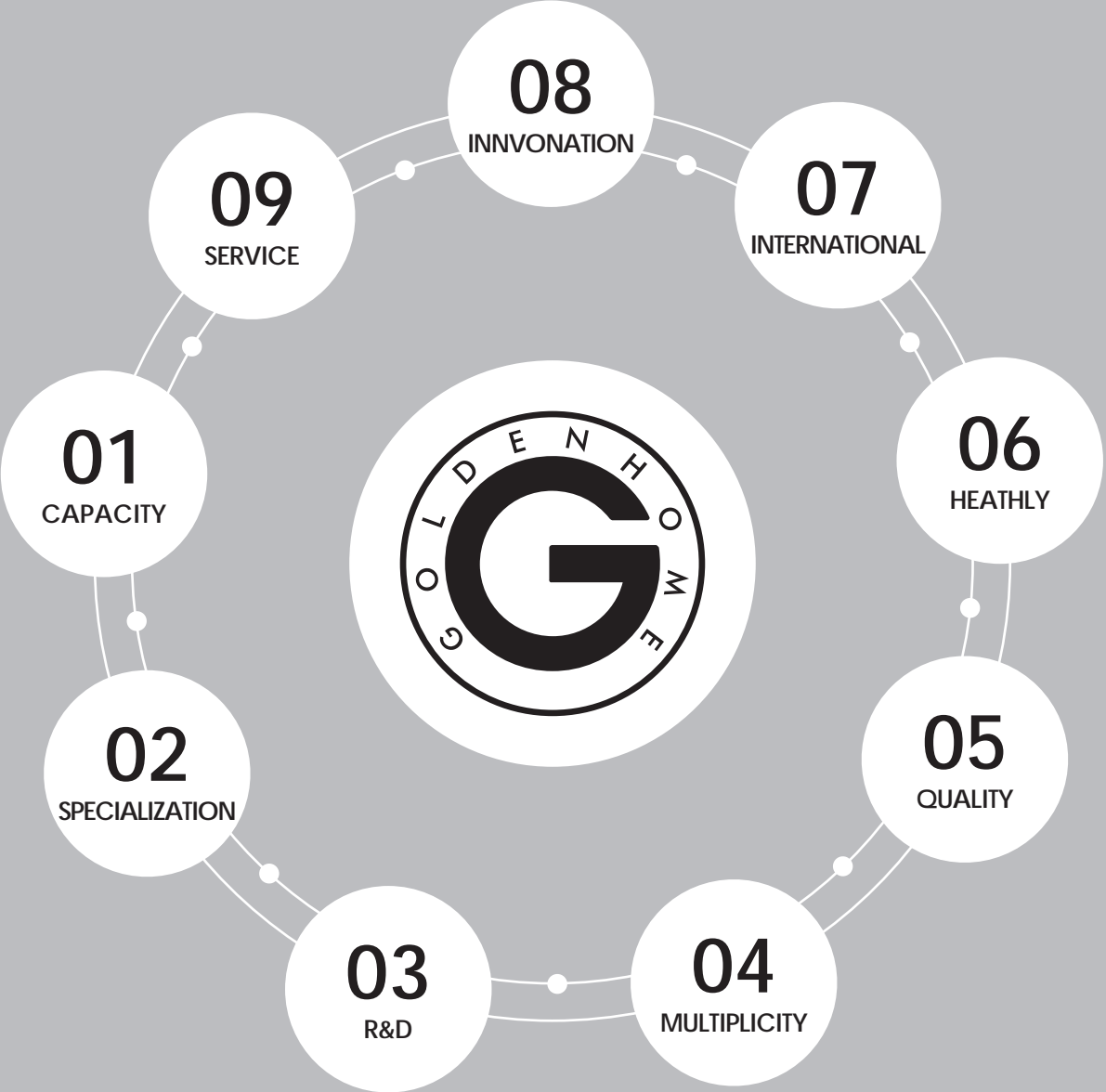
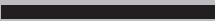
Project Reference



GoldenHome™ Kitchen

What makes GOLDENHOME?

As one of worldwide leading modern cabinet manufacturers, GoldenHome specializes in R&D, innovation, service and manufacturing of modern cabinets ranging from lacquer, laminate to thermofoil and many other unique styles.





01

Capacity

GoldenHome is proud of its industry leading capacity, owns two manufacturing bases in China, one at its Xiamen headquarter and the other in Jiangsu Province covering a total area of 830,000 sq. m., making it among the tier 1 kitchen cabinet manufacturers even at the global level.



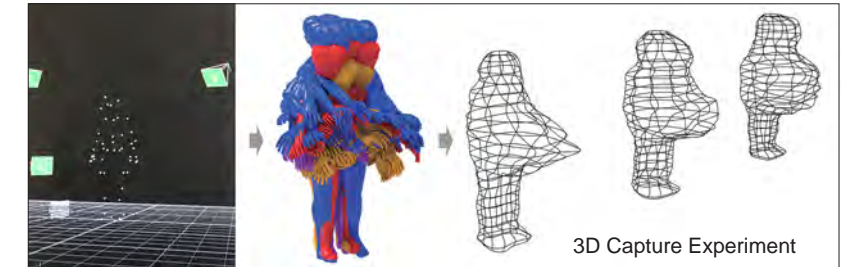
02 Specialization

Since 1999, GoldenHome has been producing brand kitchen cabinets for global markets. Instead of focusing on whole house customization, GoldenHome specializes in cabinets, which makes it become the Kitchen Industrial Design Center. Now, GoldenHome is listed on Shanghai Stock Exchange, Code 603180, and turning into one of the leading kitchen cabinet brands in the world.

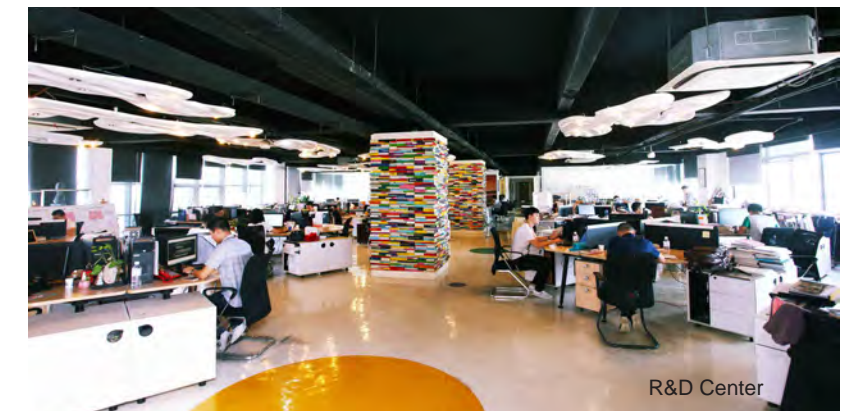


03 Research & Design

The company works with globally renowned experts to launch novel designs every year, e.g. its C3 series has been elected as the industry's leading design and best seller for years, which is benchmarked by many of its peers in the China local market.



3D Capture Experiment





04 Multiplicity

GoldenHome provides kitchen with European classic and modern style, American style, and Australian style. The products include Melamine, Lacquer, Thermofoil, Solid Wood, Glass etc., and it provides the other customized choice for the project or wholesales customers.



05 Quality

Quality is of the essence of GoldenHome operation. The company has developed globally integrated supply chain and partnerships over the years, State-of-the-art automatically controlled German HOMAG equipment is introduced for precise manufacturing, the products of Goldenhome can be used more than 10 years.



Trade Partners



06 Healthy

GoldenHome regards the customer's healthy as the top concern, so the company carefully selects environmental friendly materials to ensure customer's healthy. The company control the material from the very beginning, which makes the raw material to meet the standard of E1, KCMA, CARB 2 etc for different countries.

07

Internationalization

With over 1,000 dealer stores located across China, Australia, Middle East, and the U.S.. Millions of families rely on GoldenHome kitchens for real living life.



08 Innovation

Different from other cabinets manufacturers, GoldenHome carries out appropriate business models in different markets which include customized retails under GoldenHome brand, RTA products for wholesale and projects. Creative and flexible cooperation modes help GoldenHome go deep into the market and gain more market shares.



09 Service

As per different markets' needs, three sets of standard dimensions and structures are operated simultaneously in GoldenHome in imperial and metric systems. Also, technological service can be provided, such as training, installation, project management etc. With an excellent team of business, projects management, design, technical, production and installation, GoldenHome is dedicated to be the one who can supply qualified products with best service.





GoldenHome Milestones



Enterprise Honor

GoldenHome specializes in R&D and owns the only National Kitchen Industrial Design Center in China. It obtained the certifications of ISO9001, ISO14001 and China Environmental Labelling. The products also follow ANSI/KCMA A161.1-2017 performance construction standard.



China Environmental Labelling



Won the China Building Decoration Association



Won the Prestigious "863Program" Grant



Quality Assured Firm



Environment Assured Firm



Won the chairman unit of China National Hardware Association



Kitchen Industrial Design Center



Won the chairman unit of China Furniture & Decoration Chamber of Commerce



Won the KCMA Certified



C3

GOLDENHOME KITCHEN SERIES

- Lacquer Series
- Laminate Series
- Solid wood series
- Thermofoil Series



C4

Designed with high quality lacquer, C4 is a mission impossible. White lacquer door with gold color handles, embedded integrated kitchen appliance create the impression of linear and uniform appearance. It is no wonder this style has advanced to the ranks of new designer kitchens.





Aden

Designed with contemporary rhythm and unique "J" shape handle, Aden reveals a strong identify of modern city life. The splitlevel island, the satin black worktop and blue opening shelves are harmoniously coordinated, reflecting a sweet homely atmosphere in speedy city.





Waltz

Love of the modern and modern life, these concepts are in great demand and the trend is enjoying increased popularity. Numerous charming details such as high-gloss surface, straight lines handles, curved door edges. This red appearance turns this kitchen into a real star.





C2S

You do not need to hide any surprise when you glimpse the finishing and design of this kitchen. The perfect function of flap-up door hardware make a safe cooking space. Your individual choice to suit your taste from total 12 colors. Whether in whatever color turn your kitchen into a visual highlight with lasting appeal.





C1P

Distinguished by the matt lacquered doors in a new white color matching artwood surface overheads, C1P is also special for its shark nose handle. This tidy look is perfect for most modern loft, creating much more comfort and convenience.





Aegean 2

This European kitchen combines many characters in one, classic, elegant and exquisite. Designed with white lacquer doors featuring gold decorations and the central island with delicate glass door, it creates the joy of living atmosphere.



Amani 1

The mix and match of two colors drives fashion and neutral wind in the kitchen. Unique streak fabric finish with cotton and linen fabric brings excellent skin-friendly feeling. Glossy T-shaped handle shows the minimal design, presenting your kitchen a new look.





Sunshine 2

The beautiful matching of pure color and wood grain creates a homely ambiance in the kitchen. The design of high gloss surface is contributed to saving the time and energy to take care of it. PET, food grade material, cares for family health, encouraging you to sit down with friends, eat great food and lounge at the table.





Grace 3

Brief and concise design of Grace 3, this Japanese style brings you a recreational feeling when you are in the kitchen. Elegant and scratch-resistant door panel with Japanese style is eye-catching, making a polished serenity and peaceful atmosphere for you.



Amani 7

A symmetrical design is more pleasing to eyes with its fusion of wooden and concrete texture when the kitchen is opened to the family. Bringing nature inside can be as easy as hanging drapes with a pattern that reflects the outdoors.





Piano 3

Serving as a homework and crafts station during meal preparation, the kitchen is also a wonderful spot to enjoy a morning coffee and the golden sunshine flooding from window streaming in via the garden.





SanMarino

An unique style represent yourself in a space that is for true living in a mark of quality, royalty and honour. Refined column, delicated anaglyph, creative handles and white lacquer with silver decora-tion, with the mixture of Italian and Chinese culture take you to enjoy the nature of life.



Sicily

Valuable materials and traditional forms unveiled today's spirit for Italian culture with natural birch and hand-carved patterns. A prestigious, qualified kitchen with countless solutions that lend itself to a versatile solution to be used as an ambiance to be "lived" to the full.





Orola 2

Whether you prefer understatement or a design statement, the Orola 2 is sure to speak volumes. They look both elegant and stylish when intergrated into dark furniture, whilst a lighter surrounding will ensure they really stand out. In both cases, your kitchen will reflect your excellent taste, thanks to the design and advanced technology.





Seattle 1

Stereoscopic door, exquisite texture, black glossy handle shows mellow and classic appearance, bring excellent hand feeling. Nature and leisurely kitchen in pastoralism, presents high quality and slow rhythm lifestyle.





More Choices Available



C2 Lacquer



C3 Lacquer



C3S Lacquer



C2S Lacquer



T2 Glass



C1 Laminate



Aegean Lacquer



Alps 2 Lacquer



Vogue 1 Lacquer



Grace 2 Laminate



Piano Laminate



Maple2 Laminate



Vienna Lacquer



G5 Lacquer



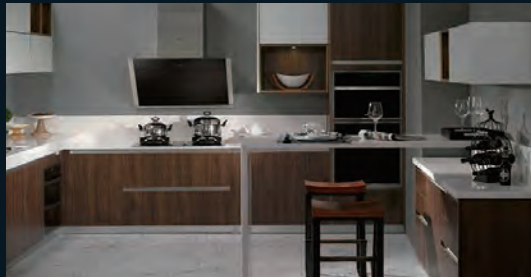
C4 Lacquer



Amani 3 Laminate



Pinnacle 1S Laminate



Sunshine 1S Laminate



More Choices Available



Perennial 1S Laminate



Piano 3 Laminate



Amani 2 Laminate



Sonia 1 Solid wood



Sonia 2 Solid wood



Buckingham Solid wood



MonteCarlo Solid wood



Ancona Solid wood



Tennessee Solid wood



Fortune Solid wood



Positano Solid wood



Nice Solid wood



Fortune 1S Solid wood



Seattle 2 Thermofoil



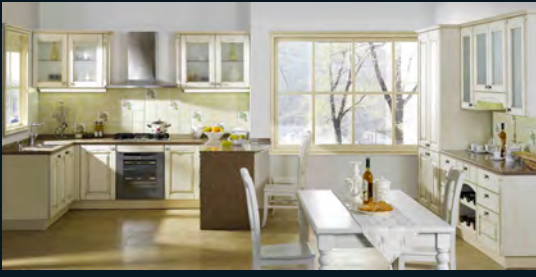
Seattle 3 Thermofoil



Oriental Thermofoil



Orlando Thermofoil



Seine Thermofoil



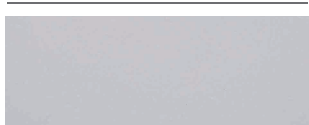
GOLDENHOME COUNTERTOP

- ARTIFICIAL STONE
- QUARTZ STONE



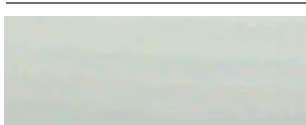
ARTIFICIAL STONE

C2

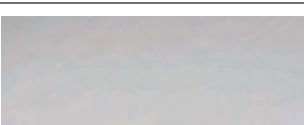


C202

C4

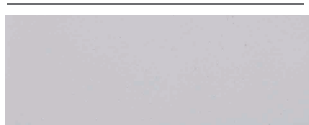


C401



C402

E1



E101

E2



E201

QUARTZ STONE

D0



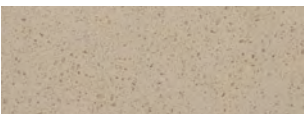
D01



D02



D03



D04

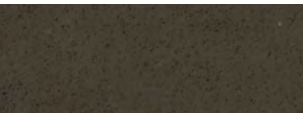


D05

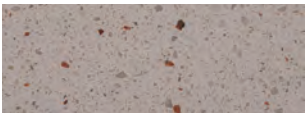
D1



D101

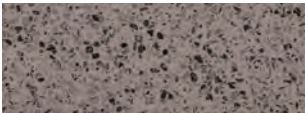


D108

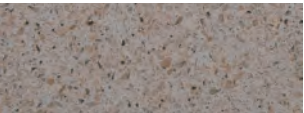


D111

D2



D201



D203



D204

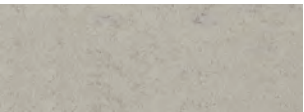


D205

D3

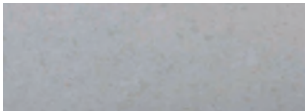


D303

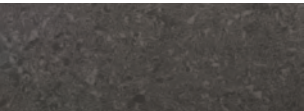


D304

D4



D401



D402



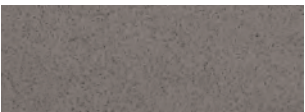
D403

D5

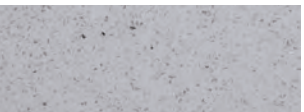


D501

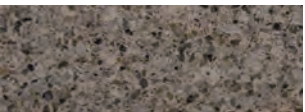
F0



F01



F02



F03

F1



F101U



F102U

F2



F205



F207

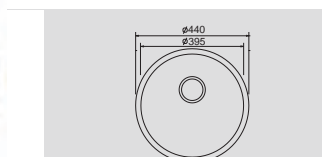


GOLDENHOME SINKS & FAUCETS

SINKS



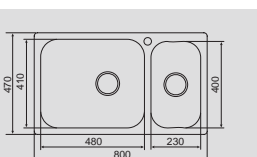
PM343



Dimension : 440xH185mm



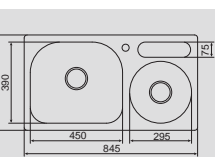
PM34823



Dimension : W800xD470xH200mm
Cut-out Size : 780x440 R20



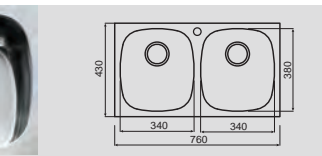
PM34530



Dimension : W845xD455xH200mm
Cut-out Size : 820x430 R20



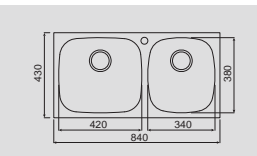
PM3001



Dimension : W760xD430xH180mm
Cut-out Size : 730x400 R20



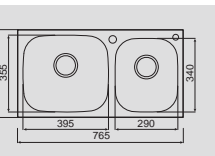
PM3003



Dimension : W840xD430xH195mm
Cut-out Size : 810x400 R20



PM3002

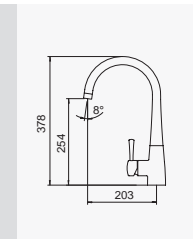


Dimension : W765xD405xH180mm
Cut-out Size : 735x375 R20

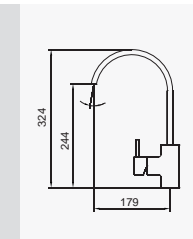
FAUCETS



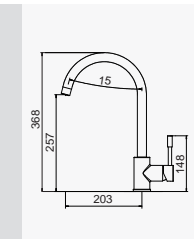
MT201



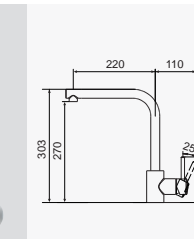
MT202



MT203



MT205





GOLDENHOME DRAWERS & RACKS

DRAWERS



**Damp Drawer With Gallery
D Height (Silk White)
BC7047**
Nominal Slide Length: 350/500mm



**Damp Drawer With Gallery
D Height (Silk White)
BC7049**
Nominal Slide Length: 500mm



**Silk White Inner Drawer
M Height 600mm Width
BC7050-1**
Slide Nominal Length: 500mm



**Touch-Open Drawer
Accessories (Electrical)
WJ025244/WJ025243/
WJ025046**



**Cross and Lateral Divider
(Silk White)
WJ025206/WJ025208/
WJ025209**



**Cross and Lateral Divider
(Terra Black)
WJ025217/WJ025219/
WJ025220**



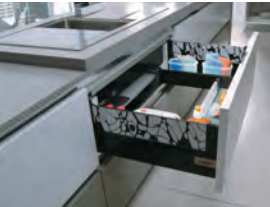
**D/30KG Damp Drawer-A
(Terra Black) BC7039**
Nominal Slide Length: 350mm/500mm
Min Height Inside Cabinet: 160mm



**D/30KG Damp Inner Drawer
(Terra Black) BC7041**
Nominal Slide Length:
For 450/600mm Width Unit



**D/30KG Damp Drawer-B
(Terra Black) BC7045**
Nominal Slide Length: 350mm/500mm
Min Height Inside Cabinet: 160mm



**Terra Black Sink Cabinet
Low Drawer BC7142
High Drawer BC7141**
Nominal Slide Length: 500mm



M/30KG Terra Black Damp Drawer BC7040
Nominal Slide Length: 350mm/500mm
Min Height Inside Cabinet: 81.5mm
M/30KG Damp Inner Drawer BC7042-1
Nominal Slide Length: 500mm
For 450/600mm Width Inner Drawer Unit

RACKS



GH 270corner tray-710
Item No.: 101113
Suit for the cabinet
W900mm,H760mm



**GH 270 ARENA
corner tray-710**
Item No.: 101112
Suit for the cabinet
W900mm,H760mm



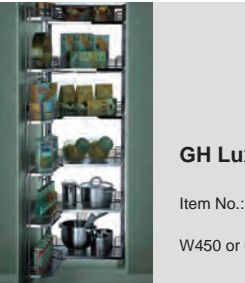
**GH ARENA Full swing
corner pull-out**
Item No.: 101009,101010
Suit for the cabinet
W900mm H600-730mm



**GH Full swing
corner pull-out**
Item No.: 101009,101010
Suit for the cabinet
W900mm H600-730mm



**GH ARENA swivel pull-
out basket with damping**
Item No.: 202219、202220、202221
202215、202222、202216
Suit for the cabinet
W450mm or 600mm,H600-730mm



GH Luxury Swivel Pull-out Basket
Item No.: LDP045M, LDP060M, LDP045H, LDP060H
Suit for the cabinet
W450 or 600mm, H1400 or 2100mm



**GH Flat steel Magic
corner with damp**
Item No.: 101035,101036
Suit for the cabinet
W900mm,H600-730mm



**GH Luxury Magic corner
with damp**
Item No.: Suit for the cabinet
W900mm, H700mm



GOLDENHOME BATHROOM

- Modern Style
- Europe Style

Bathroom Cabinets Modern Style



Bathroom Cabinets Europe Style

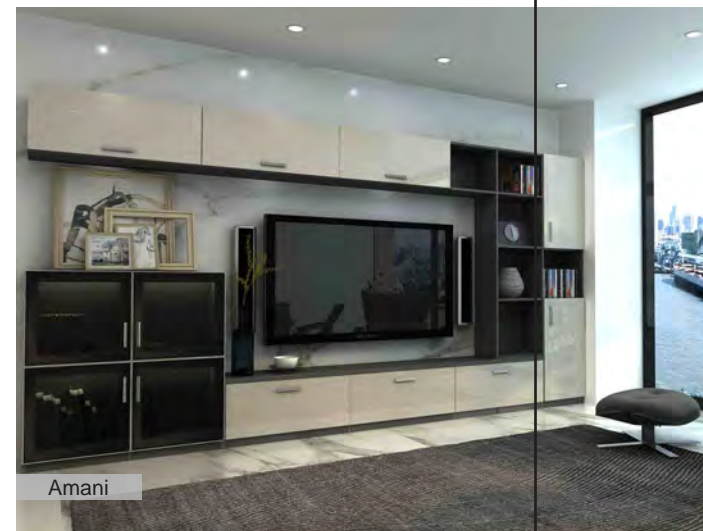




GOLDENHOME WARDROBE

- Modern Style
- Europe Style

Wardrobes Modern Style



Wardrobes Modern Style





International Goldenhome

More and more families are using Goldenhome products for kitchen renovation in China, America, Dubai, Australia.....

America



Los Angeles



Eastern North American Center Warehouse



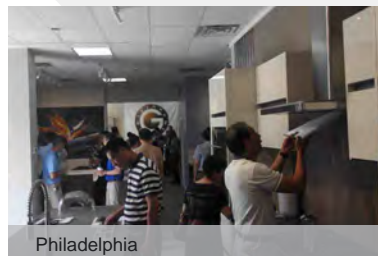
Western North American Center Warehouse



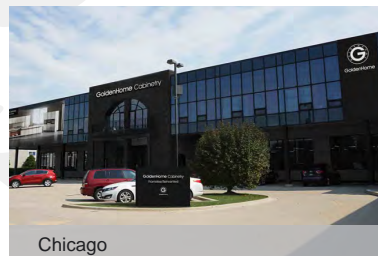
KBIS-Las Vegas



Los Angeles



Philadelphia



Chicago



KBIS-Orlando

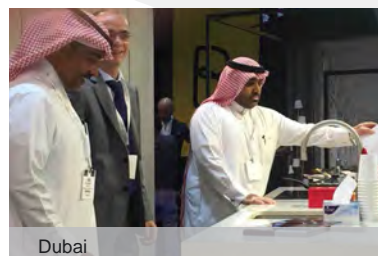
Dubai



Dubai



Dubai



Dubai

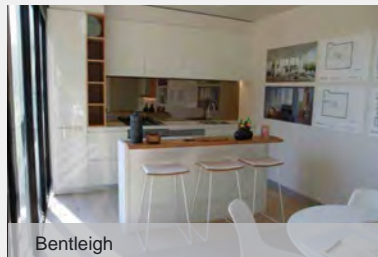


Dubai

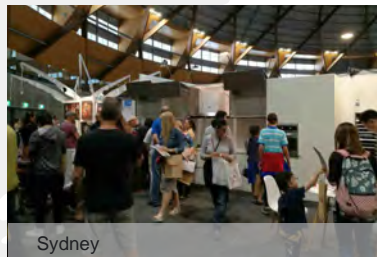
Australia



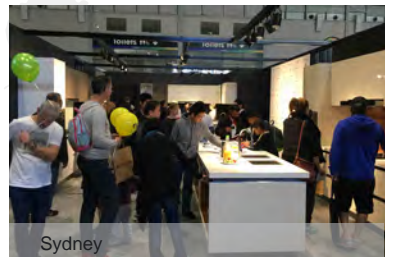
Adelaide



Bentleigh



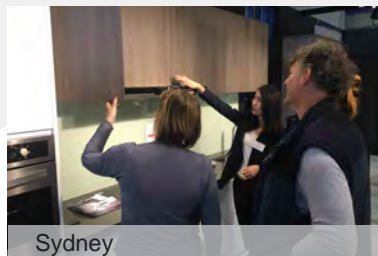
Sydney



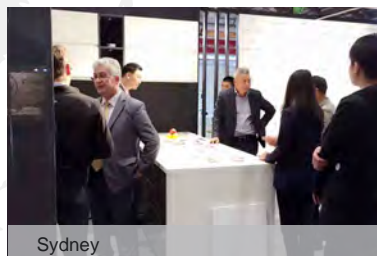
Sydney



Sydney



Sydney



Sydney



Melbourn

other countries



Malaysia



Myanmar



Egypt

As the first kitchen cabinet enterprise which exports its products to overseas with their own brand, Goldenhome is mainly serving American, Middle East and Australian and other developed countries kitchen cabinet market.



Sales Network Around The World



Project Reference



◀ Project: *Empire*
Location: *Melbourne, Australia*
Quantity: *484 units*



▲ Project: *Avant*
Location: *Melbourne, Australia*
Quantity: *456 units*



◀ Project: *Al Habtoor City*
Location: *Dubai, UAE*
Quantity: *1415 units*



▲ Project: *409 Manhattan Condo*
Location: *New York, USA*
Quantity: *212 units*



▲ Project: *Doral land mark*
Location: *Miami, USA*
Quantity: *128 units*